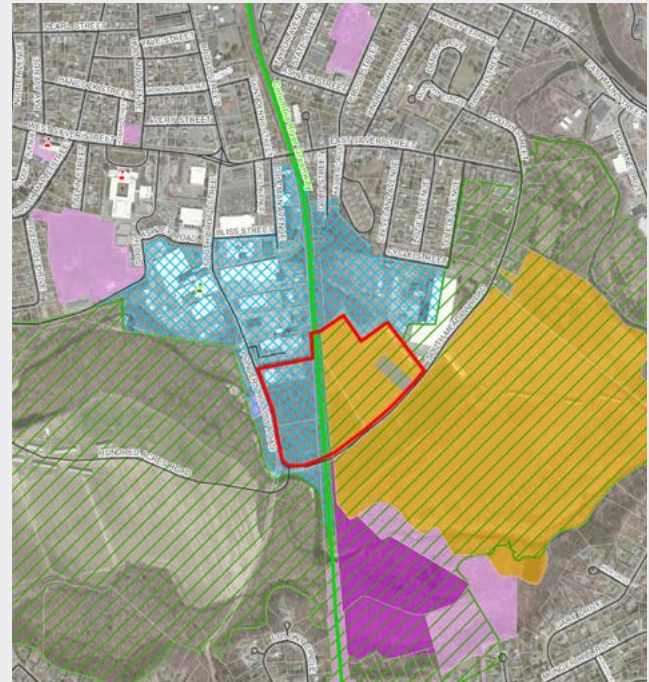


Power Plant Siting and Licensing Services

Siting and licensing of new or repowered facilities requires a balanced understanding of the interplay of operational, economic, regulatory, environmental, and community concerns. Tetra Tech's professionals have a strong track record of successful project siting and licensing.

We have decades of energy experience and a team of senior professionals with extensive power plant permitting expertise. Through this professional experience, the Tetra Tech team understands the current precedents and practices in the evolving energy marketplace as well as the practical realities of day-to-day operation. This practical perspective enables us to obtain permits with conditions that provide operational flexibility that matches the dynamic marketplace.



Tetra Tech brings high quality strategic and technical support that allows clients to focus on their core business to achieve development goals.

- With offices located throughout the U.S. and Canada, we utilize teams integrating our national power practice leaders with local technical experts.
- Proven track record of effective communication and relationship-building with the public and local, state and federal opinion leaders and decisionmakers.
- Permitting plans are tailored to meet project-specific business objectives, concerns and goals.
- Strong technical expertise results in sound, complete and accurate analyses as the foundation for project review.
- Seasoned program managers have the ability to integrate diverse members of project teams to work together to control costs and accomplish the desired outcome and schedule.

From initial site selection, project feasibility assessment and comprehensive permitting, we help turn your concept into the reality of a fully permitted and financeable project.

Tetra Tech is a leading provider of consulting, engineering, program management, construction management, and technical services. The Company supports commercial and government clients by providing innovative solutions to complex problems focused on water, environment, energy, infrastructure, and resource management. With 13,000 employees worldwide, Tetra Tech's capabilities span the entire project life cycle.©

Tetra Tech Siting and Licensing Services

Tetra Tech offers the full range of management and technical services to support the siting and licensing of complex energy projects.

Environmental/Engineering/Planning

Critical Issues (Fatal Flaw) Analysis • Permit Strategy Development • Site Selection including Fuel Supply and Electric Transmission Considerations • Water and Wastewater • Noise • Control Technology Evaluation • Phase I and II Environmental Site Assessments

Regulatory Compliance and Permitting

Siting Board Petitions • Comprehensive Environmental Review Documents (NEPA, state-level and local-level) • Air Permits, including Greenhouse Gas • Water Permits (Groundwater, Surface Water, Section 316(b), NPDES, SWPPPs, Industrial Wastewater Treatment/Discharge) • Solid/Hazardous Waste Permits (Ash, Pollution Control Solids, Other Wastes) • Construction Permits

Resource Surveys, Assessments, and Plans

Wetlands and Water Resources • Threatened and Endangered Species • Terrestrial and Aquatic Ecology • Archaeological Resources and Historic Structures • Soils and Geology, including Geotechnical • Socioeconomics • Land Use and Recreation • Visual • Noise • Traffic

Construction and Operation

Compliance Monitoring Plans and Implementation (including SPCC Plans, E&S Plans, RMPs) • Air Permit Emissions Source Testing, • Monitoring, Recordkeeping, Reporting • Wastewater Discharge Monitoring • Compliance Reporting • Permit Modifications and Negotiations • OSHA

Public Involvement and Expert Testimony

Stakeholder Engagement • Public Involvement Plan Preparation and Implementation • Agency Negotiations • Open Houses and Working Groups • Public Hearing Support

Tetra Tech Siting and Licensing Capabilities:

- Tetra Tech professionals have successfully permitted over 50,000 MW of power plants
- Experience with the full range of fuels (coal, oil, natural gas, syngas, petroleum coke, biomass, municipal solid waste, and refuse-derived fuel) and technologies (simple and combined cycle generation, cogeneration, conventional boilers, fluidized bed boilers, and integrated gasification combined cycle)
- Permitting teams with experience in locations with comprehensive environmental requirements (e.g., California, New York) as well as locations where individual focus is on resource permits
- Projects range in size from 5 to 3,200 MW

Company Facts:

- 13,000 employees
- Annual revenue: \$2.5 billion (FY2014)
- NASDAQ Symbol: TTEK
- Geographic reach: More than 300 offices worldwide



For more information:

Phone: +1 (626) 351-4664 ■ Email: elecgen@tetrattech.com