

Engineering, Procurement, Construction Management (EPCM)



Yukon Zinc Corp., Wolverine Mine, detailed engineering and procurement, 2008–2010

You know our work in studies, but did you know we also do EPCM work?

Embedded in our mining philosophy and that of our clients is a common understanding of what constitutes the critical drivers in engineering, procurement, and construction management (EPCM)—the risks, for instance, inherent in any major mining project. Early identification of both risks and drivers allows us to come up with mitigation strategies and resources, making projects more robust and allowing them to be operational on time. It's a cautious approach but a practical one.

Our EPCM work is identified globally by:

- Best practice methodologies
- Controlled timelines
- Proper planning and discipline integration
- Tight budget control
- Socioeconomic and risk management
- Water and energy management
- Access and transport enablement

EPCM SERVICES

Project Management

- Project planning
- Alignment
- Scope of work development
- Cost/schedule
- Resource management
- Environmental compliance

Project Controls

- WBS development and maintenance
- Cost and schedule baseline
- Development
- Cost and schedule management
- Progress measurement
- Change control

Safety

- Top-bottom commitment
- Safety in design and construction

Quality

- Quality assurance plans
- Quality control
- Implementation
- Document management

Materials Management

- Lead times
- Bid process management
- Continuous expediting
- Logistics planning and transportation

Construction Management

- Construction approach
- Work packages
- Labor relations
- Turnover plan
- Pre-commissioning

Engineering

- Conceptual to detailed engineering
- Greenfield and brownfield projects
- Constructability reviews

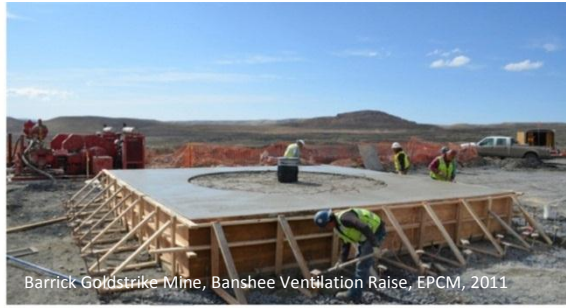
Contracts

- Contract administration
- Subcontractor coordination

Tetra Tech is a leading provider of consulting, engineering, program management, construction management, and technical services. The Company supports government and commercial clients by providing innovative solutions to complex problems focused on water, environment, energy, infrastructure, and resource management. With 13,000 employees worldwide, Tetra Tech's capabilities span the entire project life cycle.



Taseko Mines Ltd., Gibraltar Mine SAG Mill feed upgrade, engineering design and procurement, 2011



Barrick Goldstrike Mine, Banshee Ventilation Raise, EPCM, 2011



Anglo American, Minas-Rio, construction management, 2012 – present



Alexco Resource Corp., Bellekeno Mine, engineering design and procurement, 2009



Cameco Corporation, Key Lake Mine Revitalization Program, engineering design and construction management, 2013



16+

Diverse commodity types, including Iron ore, aluminum, coal, copper, gold, mineral sands, molybdenum, nickel, potash, uranium, vanadium, poly-metallic, lumber

60+

Commissions carried out globally since 2000

Top 6

Clients: Anglo American, Cameco Corporation, Chevron Mining, Freeport-McMoRan, Nevada Copper, The Mosaic Company

Corporate Headquarters

3475 East Foothill Boulevard
Pasadena, California 91107-6024 USA

Phone +1 (626) 351-4664
mining@tetratech.com

Tetra Tech Mining & Minerals

Australia	Perth, Western Australia
Brazil	Belo Horizonte, Minas Gerais State
Canada	Vancouver, British Columbia Toronto, Ontario
Chile	Santiago, Santiago Province
UK	Swindon, Wiltshire
US	Golden, Colorado