



TETRA TECH

complex world | CLEAR SOLUTIONS™

# High Performance Buildings

Expect more from our buildings

WATER

NATURAL RESOURCES

ENVIRONMENT

INFRASTRUCTURE

ENERGY



# High Performance Building Life Cycle



Tetra Tech is providing all the high performance building systems solutions and smart building technology for the 121-story Shanghai Tower

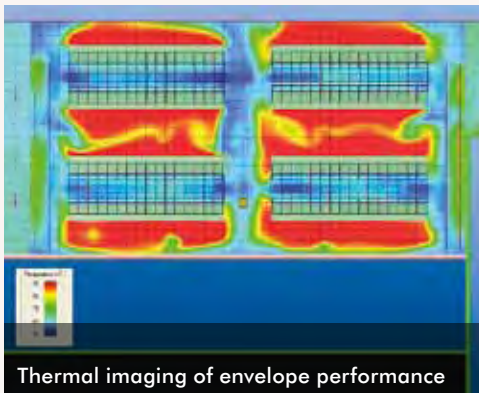
**PLANNING** that builds a sustainable consensus and a clear path forward.

**DESIGN** for greater resource efficiency, operational flexibility, and higher productivity.

**BUILD** with a sustainable purpose, reduced environmental impacts, and minimal waste.

**ASSESS** building performance now and in the future, to improve efficiencies and extend useful life.

## Service areas and benefits



Thermal imaging of envelope performance

### ENERGY

Using energy more efficiently provides significant returns on investments and enhances a facility's useful life. Our services cover the spectrum of energy use, from planning and design of efficiency solutions, to measurement, verification, and retro-commissioning.



Low Impact Development

### PASSIVE WATER & WASTEWATER SYSTEMS

High performance solutions consider all energy implications and associated costs and benefits. Our water and wastewater solutions recover and reuse water, nutrients, and energy, at the building and neighborhood scale.



Tetra Tech's building systems support highly efficient Devon Energy building

### BETTER WORKING ENVIRONMENT AND FUNCTIONALITY

Integrating designs that maximize passive systems, micro-climate benefits, and high efficient mechanical and electrical solutions, deliver high performing building environments conducive to greater tenant satisfaction, productivity, and quality of the workplace.

Tetra Tech's range of services encompasses the full spectrum of high performance building design and construction. Our work crosses every building market. Our exceptionally talented professionals, scientists, technicians and builders have been delivering high performing buildings for more than 40 years.

# 75%

of Tetra Tech's business involves sustainable design, resource management, and building greater energy and resource efficiency for our customers.

Tetra Tech performed more than

# \$150M

in building designs and related sustainable solutions, supporting a market of more than \$3B in high performance building work.

## COMMERCIAL & RESIDENTIAL BUILDINGS

Tetra Tech has improved the bottom line of buildings from coast to coast, providing new or upgrading outdated building systems, energy-efficient envelopes, maximizing and integrating local micro-climates effectively, and reducing waste generated from our projects.

## FEDERAL FACILITIES

Tetra Tech's work with the Federal Government worldwide has earned award-winning recognition for our high performance buildings and has improved the daily lives of federal personnel and their families.

## INFRASTRUCTURE

Tetra Tech delivers to counties and municipalities the same integrated cost-saving designs for industrial buildings, public facilities, utility infrastructure, and treatment plants.



Integrated systems upgrades to GSA's historic McCormack Building



USCG Facility, Gulfport, LEED Certified



Tetra Tech's S-File Asset Management Program for the USAF

## NEW LIFE FOR OLD BUILDINGS

Energy-saving technology and building material innovations bring new life to older buildings. Flexible systems, components, and controls deliver greater building functionality, usage, and usable life.

## BUILDING WITH HIGH PERFORMANCE

Our buildings are constructed with less waste, greater recycled content, minimal air-borne pollutants, and support local industry procurement to limit excessive transport. Coupled with our commissioning efforts and ongoing metering, our facilities are built for higher performance.

## LIFE CYCLE ASSESSMENT

Life-cycle assessment encompasses valuable services and tools to assist building owners with making informed, sustainable portfolio decisions. Our open architecture tools and processes assist clients with portfolio management, budget forecasting, risk assessment, and gap analysis.

**Tetra Tech** is a leading provider of consulting, architecture, engineering, program management, construction, and technical services addressing the resource management and infrastructure markets. The Company supports government and commercial clients by providing innovative solutions focused on water, the environment, and energy. With approximately 12,000 employees worldwide, Tetra Tech's capabilities span the entire project life cycle.

## Representative Projects



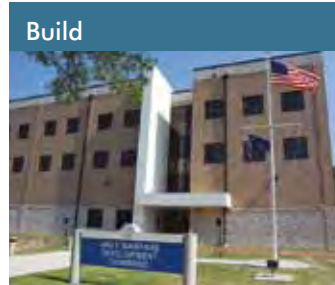
### Planning

The 172,500-sf, \$93M, I-Corp HQ's sustainable features include a brick and double glazing envelope, clay tile and green roofs, and high-efficiency mechanical and electrical systems. Seeking LEED Platinum certification, the design embodies the Army's commitment to the full panoply of sustainable design.



### Design

The 24,500-sf, LEED Gold certified, South Plant building in Renton, WA, has a solar preheating panel that helps it perform 27% better than ASHRAI 90.01-2001 standards, flow fixtures that reduce water use by 76%, and a central clerestory that provides day lighting for more than 83% of occupied space.



### Build

Tetra Tech was the design-build general contractor for the Navy Warfare Development Command's 85,000-sf, LEED-certified, state-of-the-art facility. This \$30.3M fast-track project required extensive site work and was designed for offices, planning and conference space, classrooms, support space, and to DoD anti-terrorism/force protection standards.



### Assess

Air Force Space Optimization ensures bases are "right-sized," configures operational efficiency, and reduces the Command's Operations and Maintenance "footprint." It is the AF's primary planning tool to meet its "20/20 by 2020" goal. Tetra Tech has collected more than 150 msf of data from 9 of 10 MAJCOMS.

#### PROJECTS ON FRONT COVER

Upper left: Peterson AFB, Green Roof Study Lower left: Bachelor's Enlisted Quarters, Bremerton Naval Station, LEED Gold, National DBIA Award Winner  
Right: Charles H. Bullock Elementary School, Montclair, NJ, LEED Certified



## TETRA TECH Rankings

3 <sup>rd</sup> in Auto Plants	14 <sup>th</sup> in Government Offices
4 <sup>th</sup> in Commercial Offices	7 <sup>th</sup> in Marine and Port Facilities
1 <sup>st</sup> in Distribution & Warehouses	7 <sup>th</sup> in Sports
5 <sup>th</sup> in Education	20 <sup>th</sup> in Top 100 Green Design Firms
8 <sup>th</sup> in General Building	7 <sup>th</sup> in Top 500 Design Firms

#### COMPANY FACTS:

Annual revenue: \$2.2B (FY2010)      NASDAQ Symbol: TTEK      Geographic reach: 330 offices worldwide

#### GLOBAL PRESENCE

North America: Canada, United States  
Asia: Afghanistan, China, India, Japan, Kazakhstan, Philippines, South Korea, Thailand      Pacific: Australia, Guam  
Europe: France, Germany, United Kingdom      Latin America: Chile  
Middle East: Qatar, United Arab Emirates



complex world | CLEAR SOLUTIONS

#### CORPORATE HEADQUARTERS

3475 East Foothill Boulevard, 3rd Floor  
Pasadena, California 91107-6024

Phone: +1 (626) 351-4664 • Fax: +1 (626) 351-5291

buildings@tetrattech.com

www.tetrattech.com